

SeamX QTP-1

High-strength epoxy adhesive
with integrated sealing profile

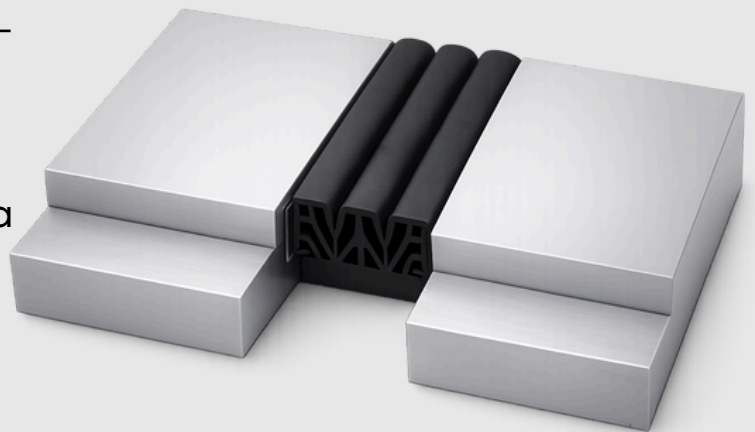
Product Description

SeamX QTP-1

includes a high-strength, two-part epoxy adhesive and an integrated sealing profile.

When installed into a joint in a concrete deck, it helps maintain joint integrity and prevents intrusion of water

and debris when used with Polybit sealing technologies.



BASIC USES

- Open-air structures
- Retrofit and new applications
- Vehicular joints where no blockout exists

SYSTEM COMPONENTS

- Integrated sealing profiles designed for Polybit sealing technologies
- High-performance joint materials suitable for pedestrian and vehicular traffic

SeamX QTP-1

FINISHES

- Available in black and grey
-

INSTALLATION REQUIREMENTS

- Appropriate mechanical fasteners and alignment components are required to ensure proper installation and system performance in coordination with Polybit sealing technologies.
-

ADVANTAGES

- No blackout required
 - Easy installation
 - Available in 20-meter rolls
-

SYSTEM PERFORMANCE

The SeamX expansion joint cover system is designed to accommodate floor movement while maintaining reliable joint integrity and sealing performance.

System performance is optimized when installed according to approved installation requirements and in coordination with Polybit sealing technologies.

WARRANTY

- SeamX systems are supplied as part of an integrated joint cover solution. System performance and reliability are ensured when installed according to approved installation requirements and in coordination with Polybit sealing technologies. Warranty provisions apply to the installed system.
-

SeamX QTP-1

NOTE

System configuration may vary depending on joint width and project specifications.

Elesseily - Polybit CMT
Construction Chemicals & Joint Sealing Technologies

39 Makram Ebeid St
Nasr City
Egypt

Elessily Global LLC
2105 Vista Oeste NW
Suite E #3236
Albuquerque, NM 87120
USA



Seamx.elesseily.com



+201001002411



5/15 Arab Engineers, Belbeis Desert Road